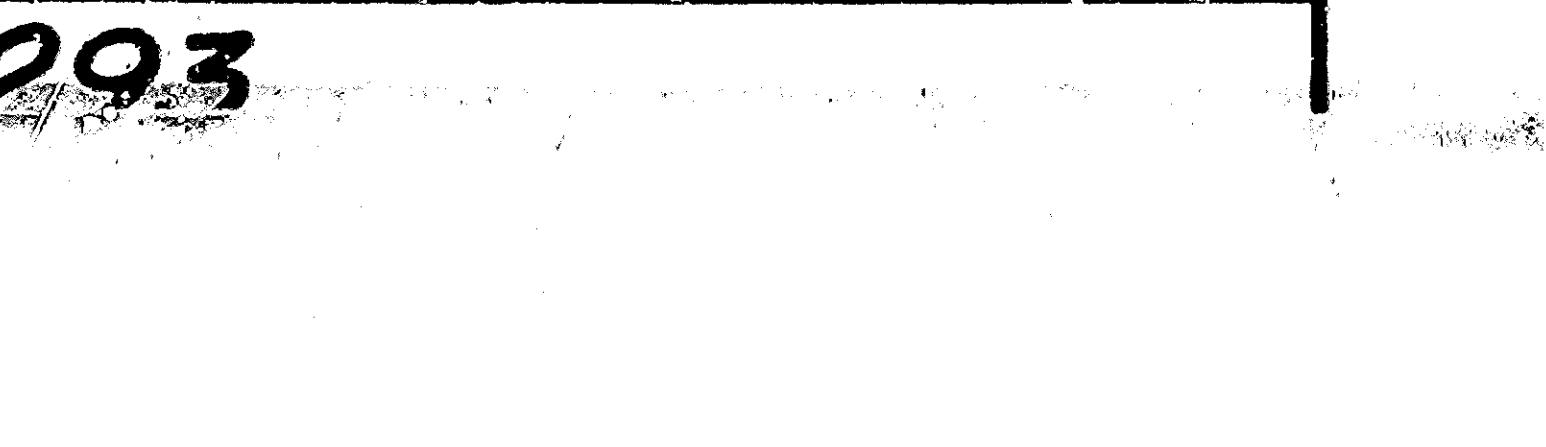
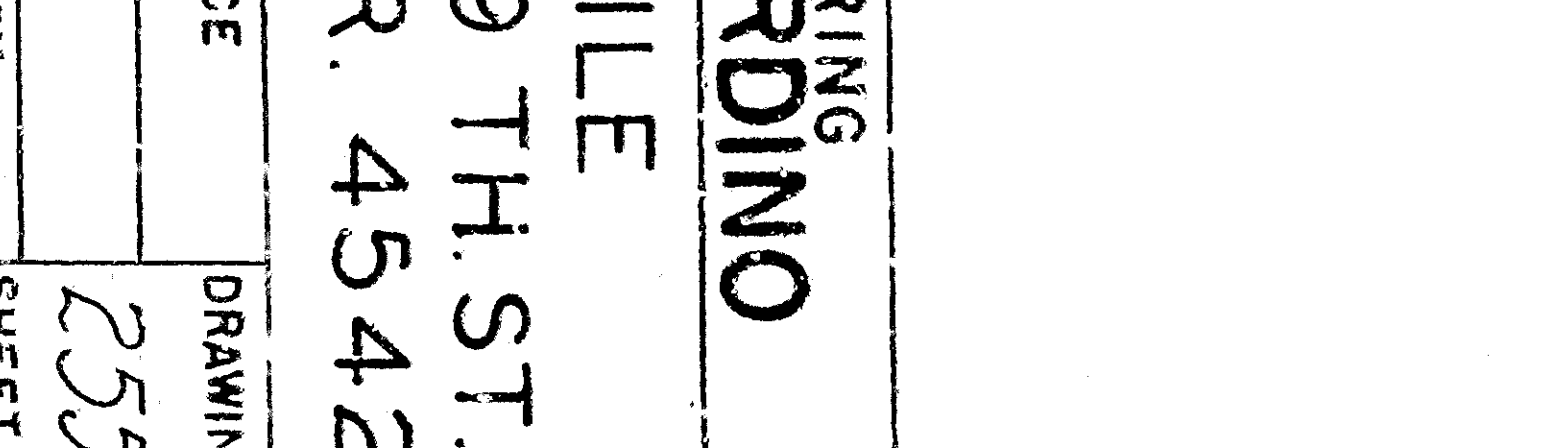
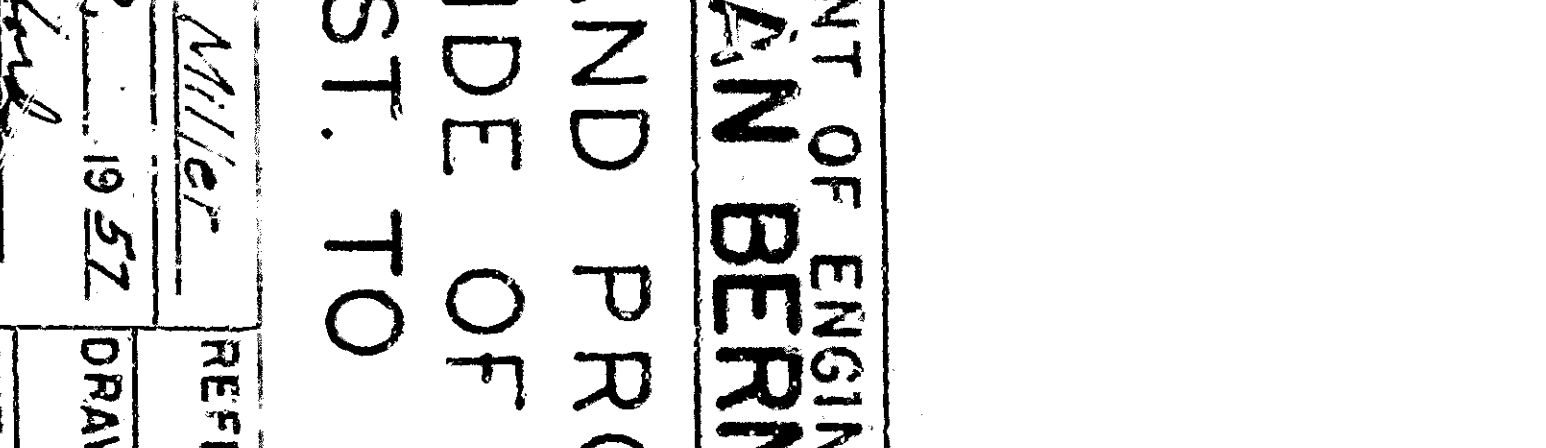
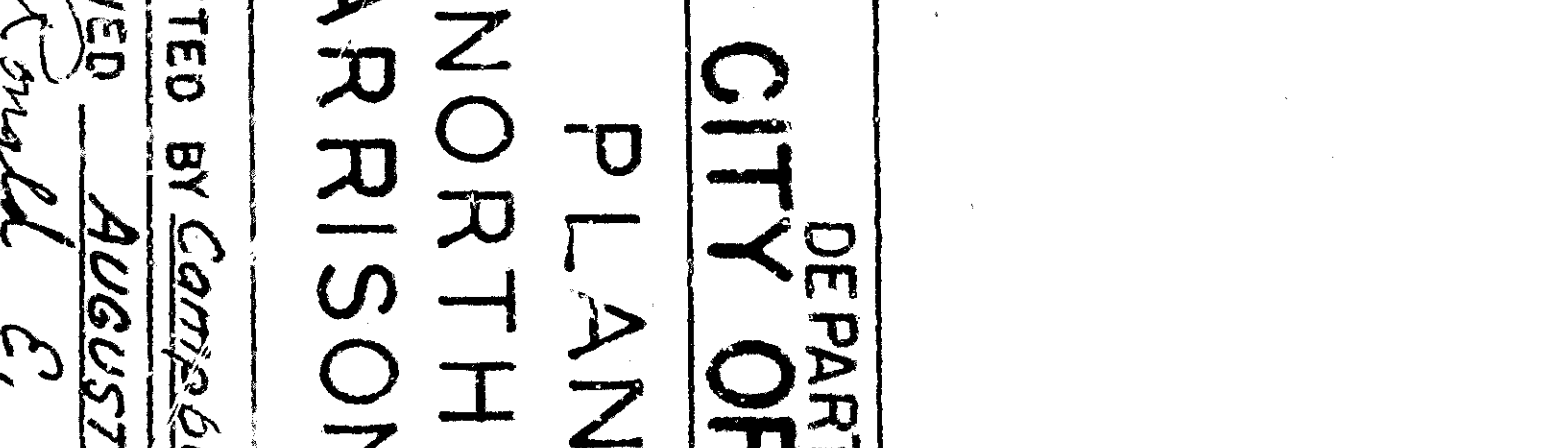
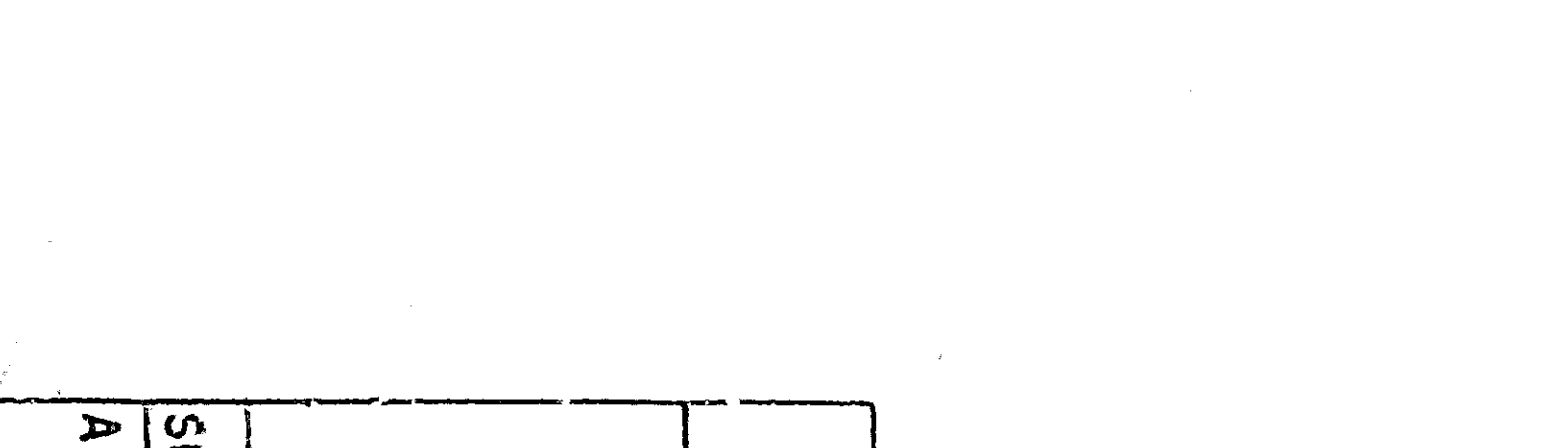
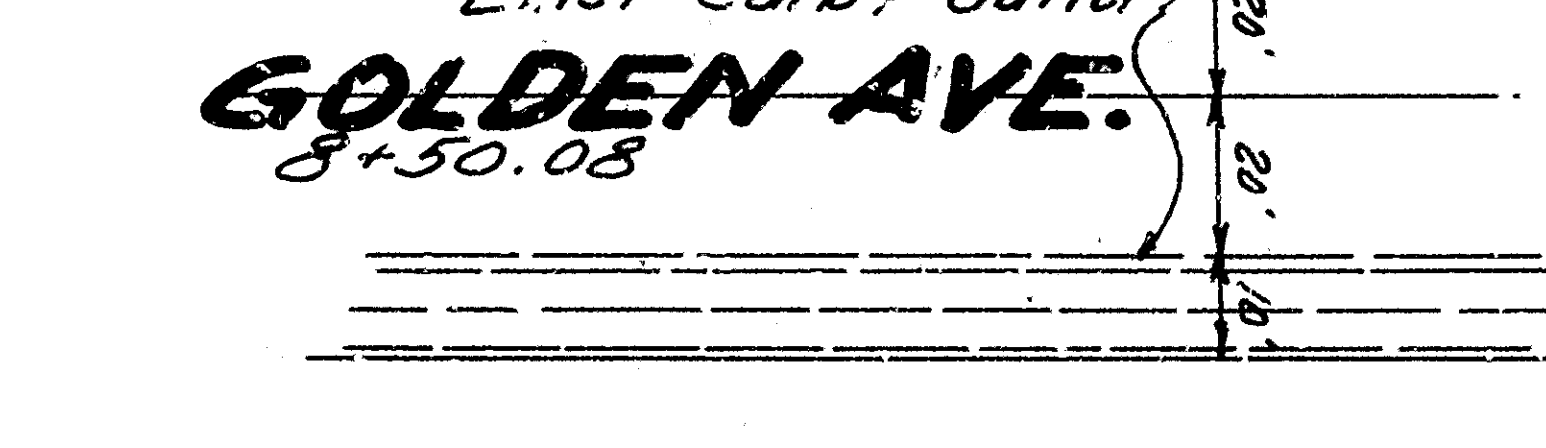
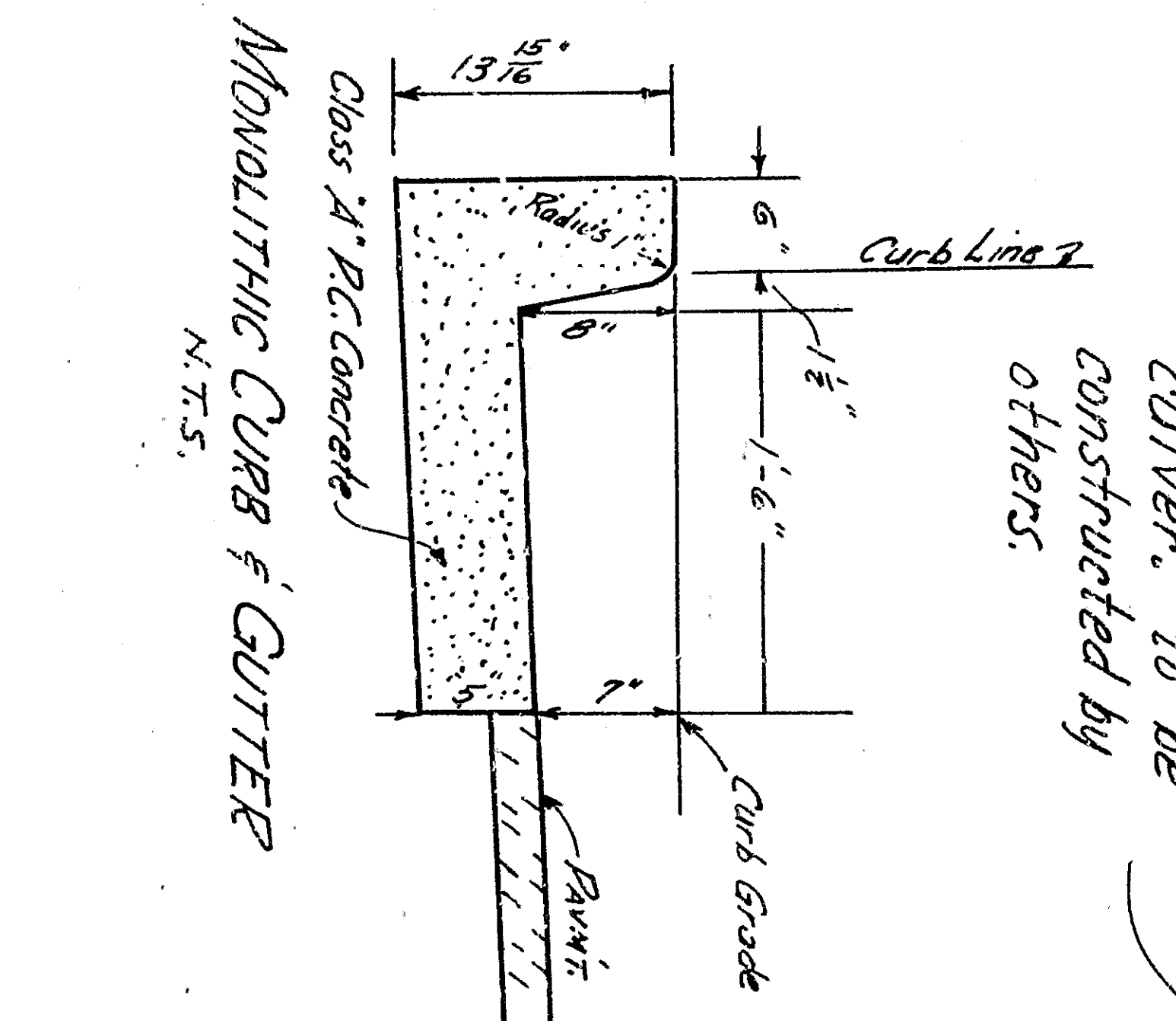
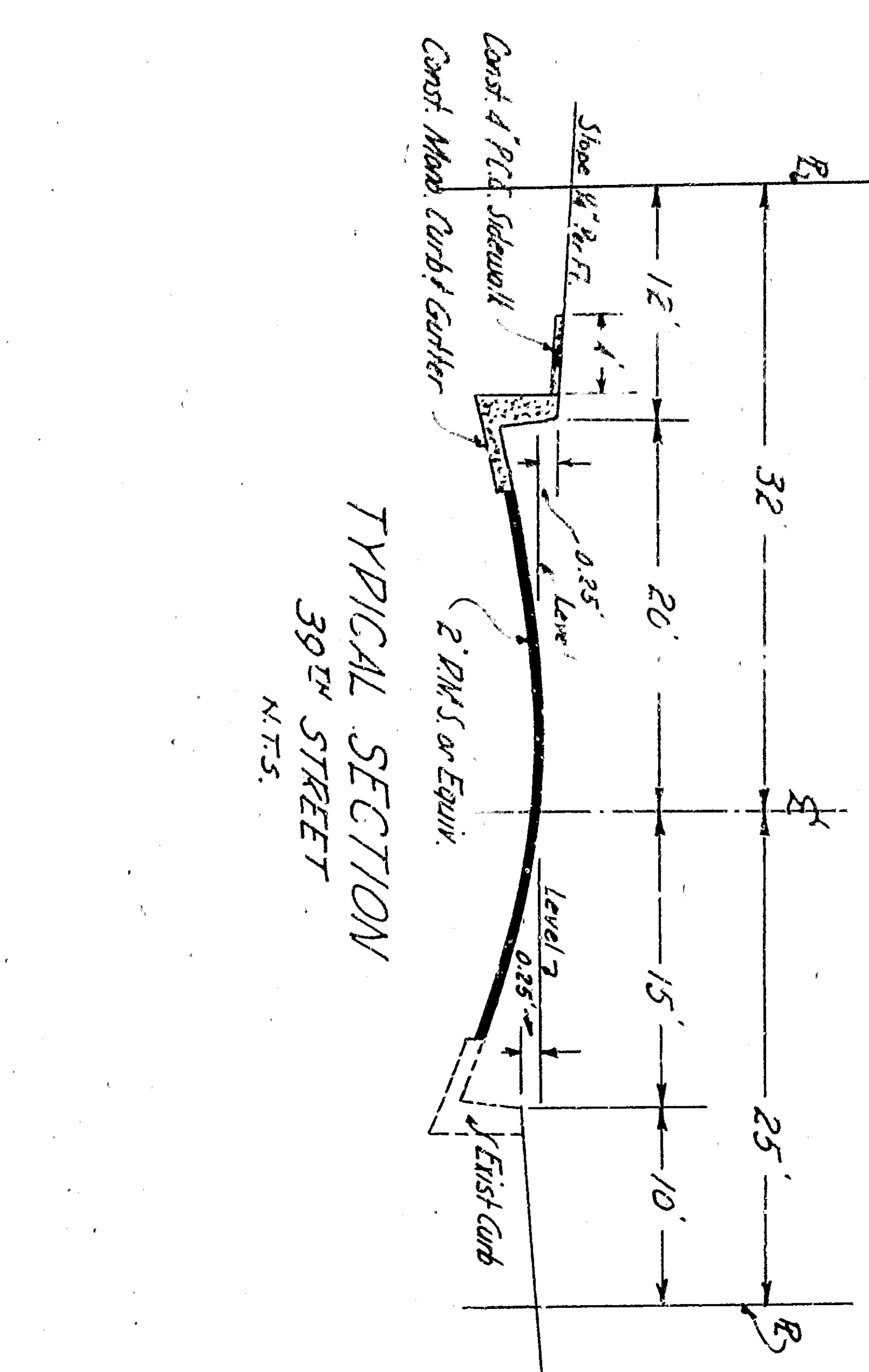
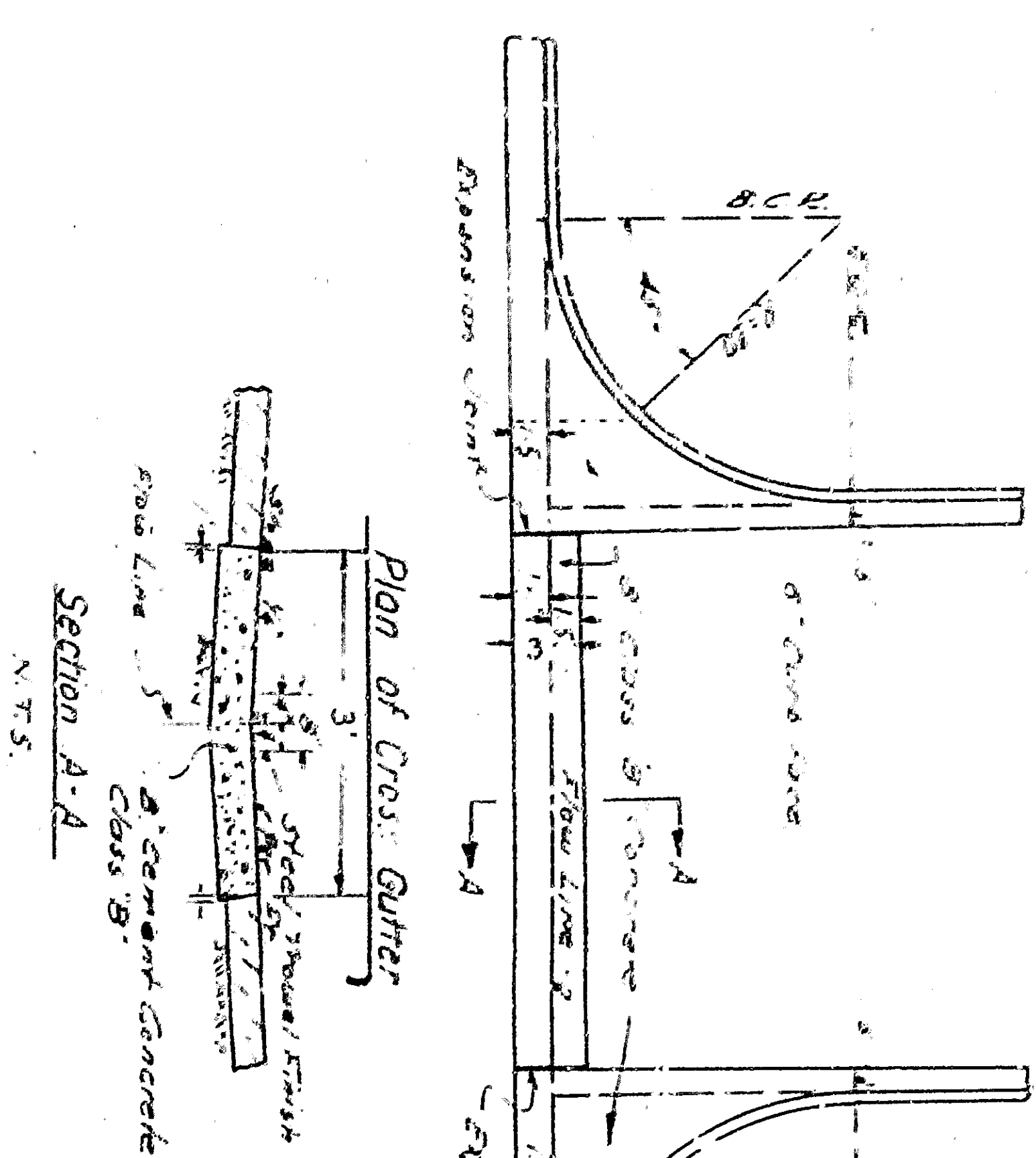


HARRISON ST.



39TH STREET

SCHOOL PROPERTY

W. Line TR. 4542

Curb Data
1-20' 01.20'
1-19' 6.6'
1-21' 2.8'

Curb Data
1-20' 00.00'
1-20' 00.00'
1-20' 00.00'

Curb Data
1-20' 00.00'
1-20' 00.00'
1-20' 00.00'

Curb Data
1-20' 00.00'
1-20' 00.00'
1-20' 00.00'

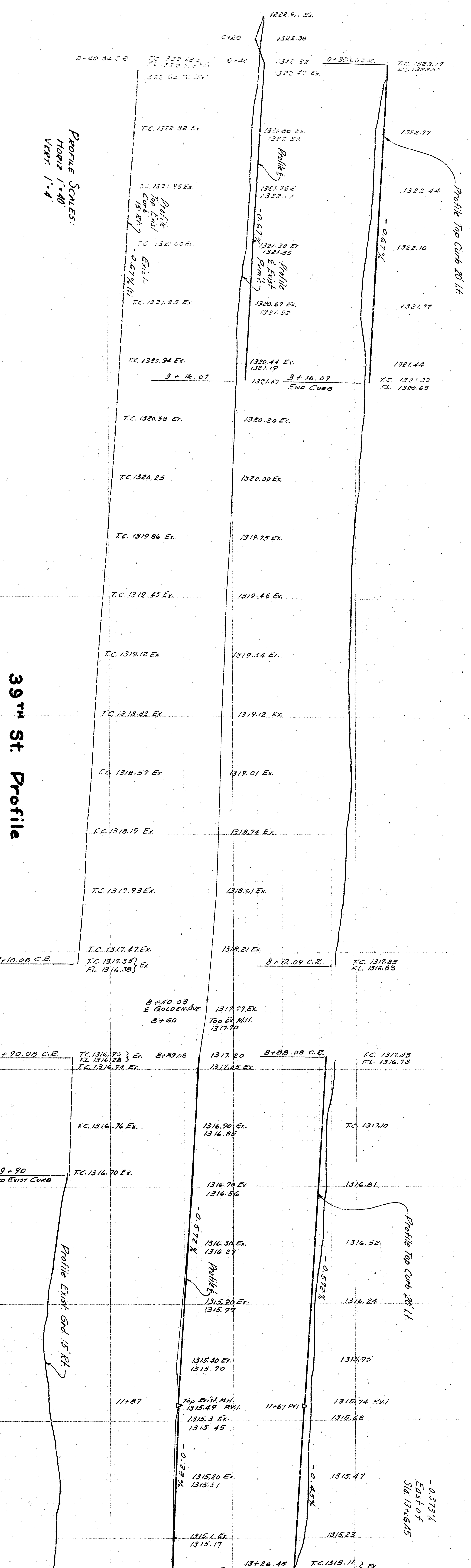
Curb Data
1-20' 00.00'
1-20' 00.00'
1-20' 00.00'

Curb Data
1-20' 00.00'
1-20' 00.00'
1-20' 00.00'

Curb Data
1-20' 00.00'
1-20' 00.00'
1-20' 00.00'

PROFILE SCALES:
HORIZ 1"=40'
VERT 1"=4'

39TH ST. PROFILE



NOTE: Curb, Gutter, Sidewalk, & Pavement between Sta 3+16.01 & 8+32.08 to be constructed by others.

NOTE: Participle curb culvert to be constructed by others.

DEPARTMENT OF ENGINEERING
CITY OF SAN BERNARDINO

PLAN AND PROFILE
NORTH SIDE OF 39TH ST.
HARRISON ST. TO TR. 4542

SUBMITTED BY: Campbell & Miller
DATE: AUGUST 12, 1952
DRAWN BY: [Name]
CHECKED BY: [Name]

REGISTERED CIVIL ENGINEER NO. 2672